

Purpose

The community profile is a summary of the social, cultural, economic, and historic dimensions of the East Desert Communities. It presents data collected through secondary sources to inform future actions. The profile, together with future studies and information gathered from general sources, highlights essential facets and “tells the story” of the East Desert Communities.

History

Early 1900s: Nipton founded after gold was discovered and added as a stop on the Los Angeles to Salt Lake Railway



Early 1900s: Wyatt Earp settles in Vidal

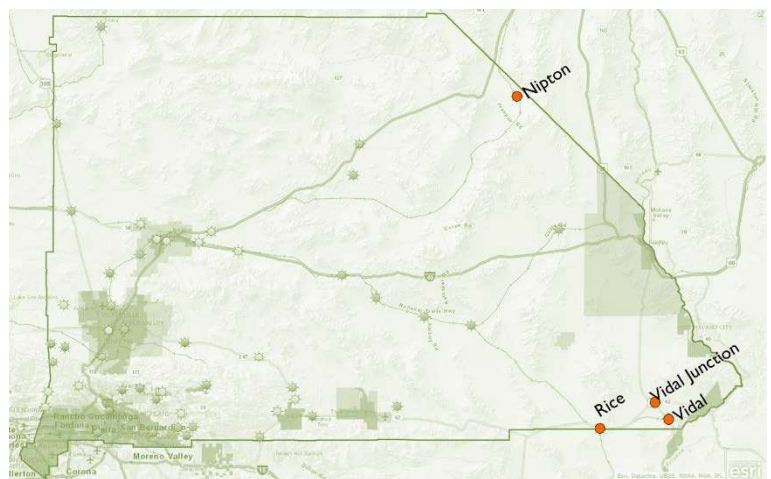
Many of the East Desert Communities have historical roots as mining towns, ranching areas or railroad stops. Nipton was established in the early 1900s after Samuel Dunc Karns discovered gold. Soon after, a railway from Salt Lake to Los Angeles was constructed and Nipton was added as a stop along the route. This allowed for more economic opportunities. It continued to grow and prosper. Today, it is home to the official Visitors Center for the Mojave National Preserve. Rice was founded around the Santa Fe Railroad. It later was home to the Rice Arm Airfield, but is now a ghost town. Vidal got its start by homesteaders. One of those homesteaders, Wyatt Earp, moved to the area to mine for gold. The community saw a boom in the 1930s when construction of the Colorado River Aqueduct drew more residents to the town. Sadly, the great depression put an end to the booming town of Vidal and during recent years the population has declined.

Source(s): Wikipedia

Location & Geography

The East Desert Communities are located along the east border of the County. Nipton, located in the northeastern portion of the county is on the border of California and Nevada. Vidal, Vidal Junction and Rice are located in the southeastern portion of the County near the Riverside and San Bernardino County border north of Interstate 10.

Source(s): Google Maps





Existing Land Use

The Land Use Zoning Designation in these areas is primarily Resource Conservation (RC) and Special Development-Residential (SD-RES), due to the remote locations that these communities fall in. Some of this area is federally owned land with no County jurisdiction.