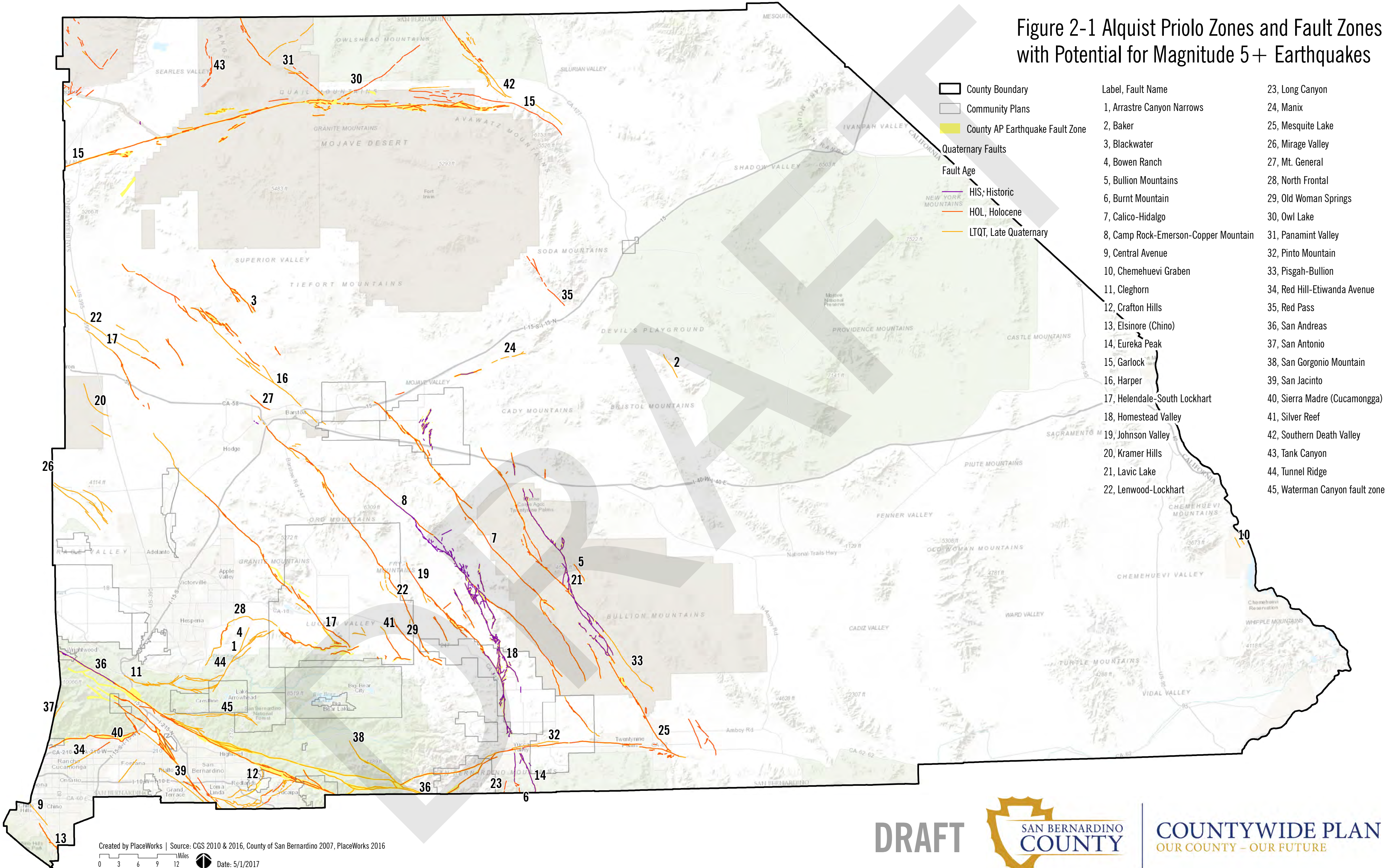


Figure 2-1 Alquist Priolo Zones and Fault Zones with Potential for Magnitude 5+ Earthquakes



Created by PlaceWorks | Source: CGS 2010 & 2016, County of San Bernardino 2007, PlaceWorks 2016

0 3 6 9 12 Miles Date: 5/1/2017

DRAFT



COUNTYWIDE PLAN
OUR COUNTY - OUR FUTURE

Figure 2-2 Liquefaction and Landslide Susceptibility

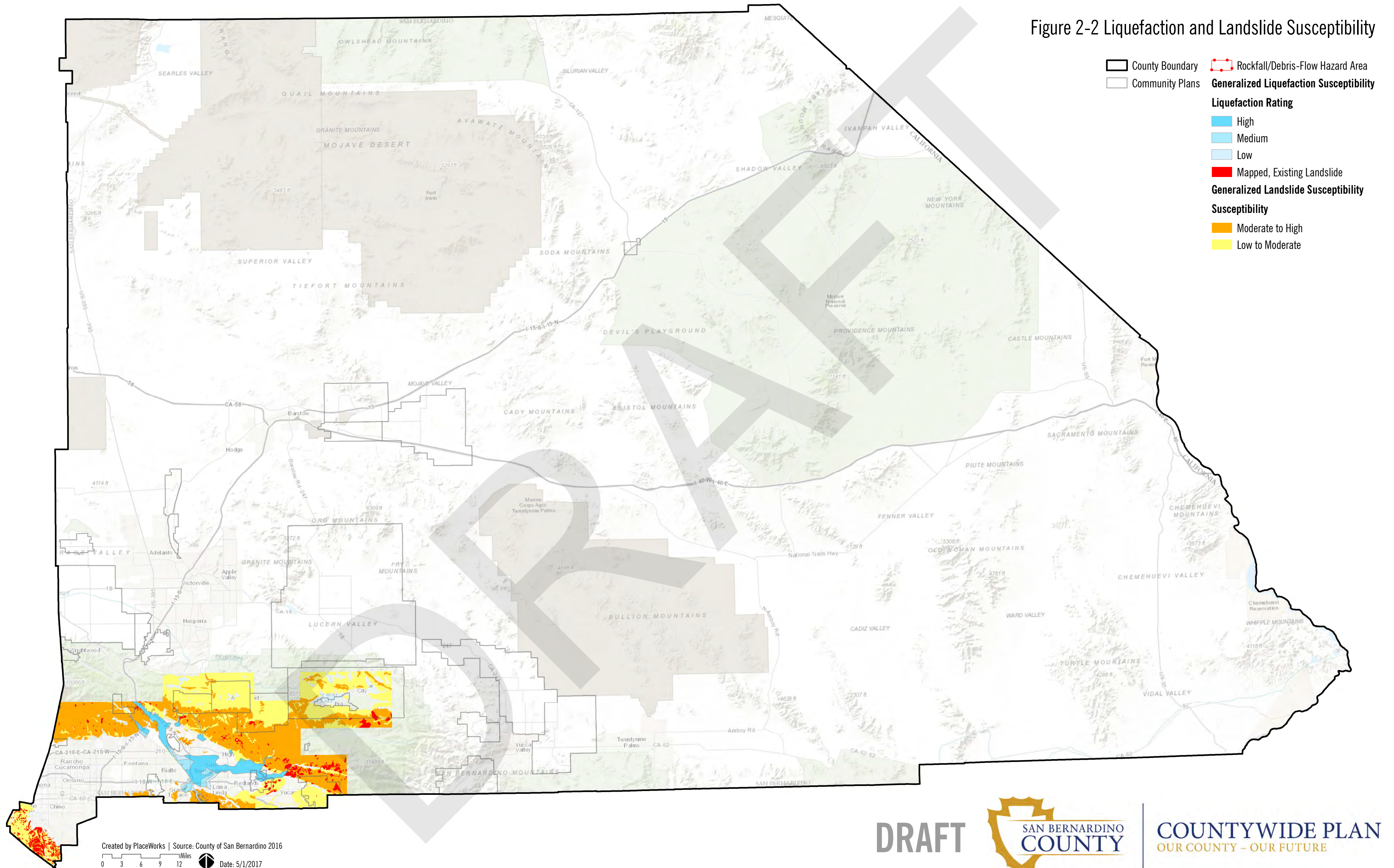
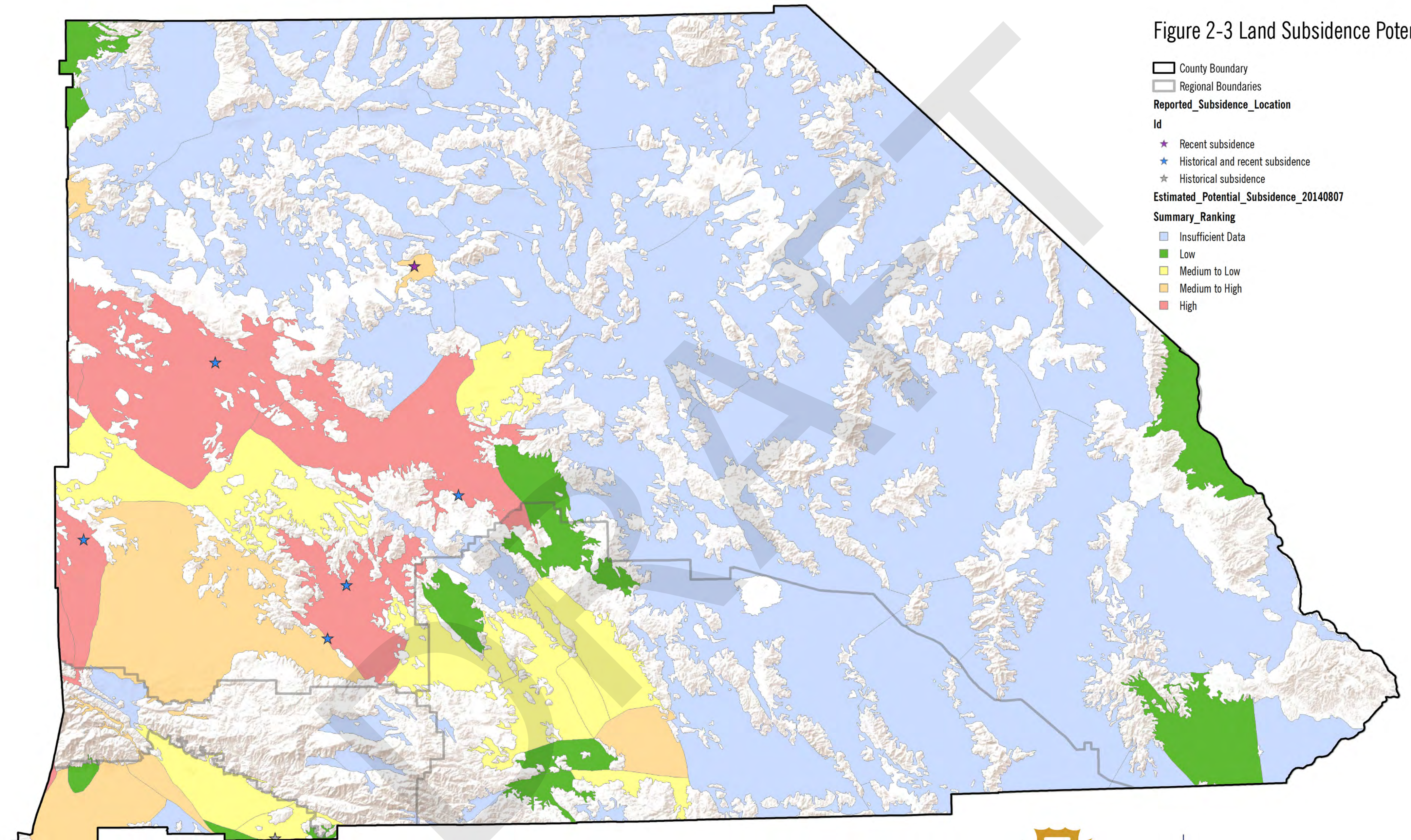
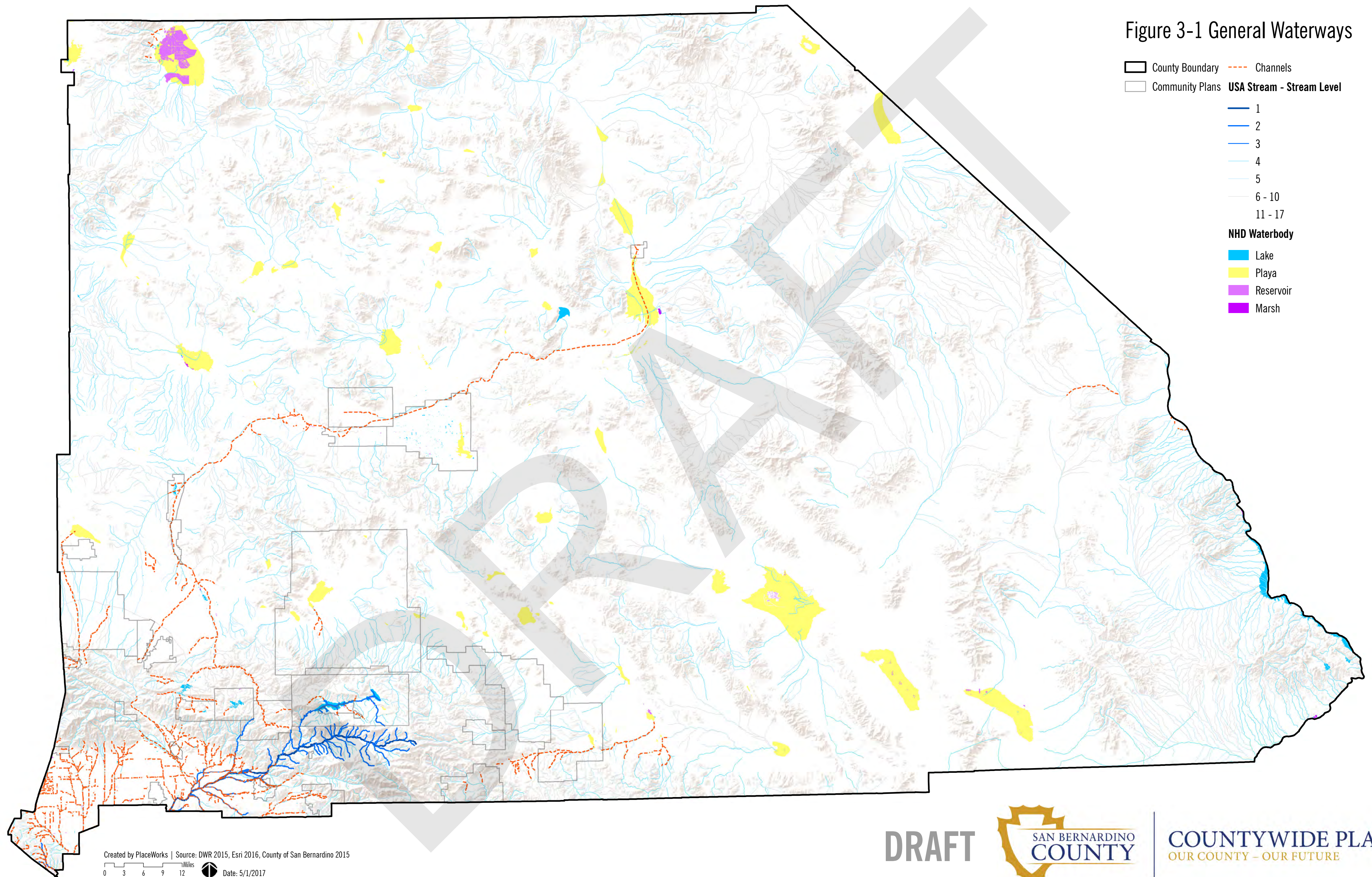


Figure 2-3 Land Subsidence Potential



- County Boundary
- Regional Boundaries
- Reported_Subsidence_Location**
- Id**
- Recent subsidence
- Historical and recent subsidence
- Historical subsidence
- Estimated_Potential_Subsidence_20140807**
- Summary_Ranking**
- Insufficient Data
- Low
- Medium to Low
- Medium to High
- High

Figure 3-1 General Waterways



- County Boundary
- Community Plans
- Channels
- USA Stream - Stream Level
 - 1
 - 2
 - 3
 - 4
 - 5
 - 6 - 10
 - 11 - 17
- NHD Waterbody
 - Lake
 - Playa
 - Reservoir
 - Marsh

Created by PlaceWorks | Source: DWR 2015, Esri 2016, County of San Bernardino 2015

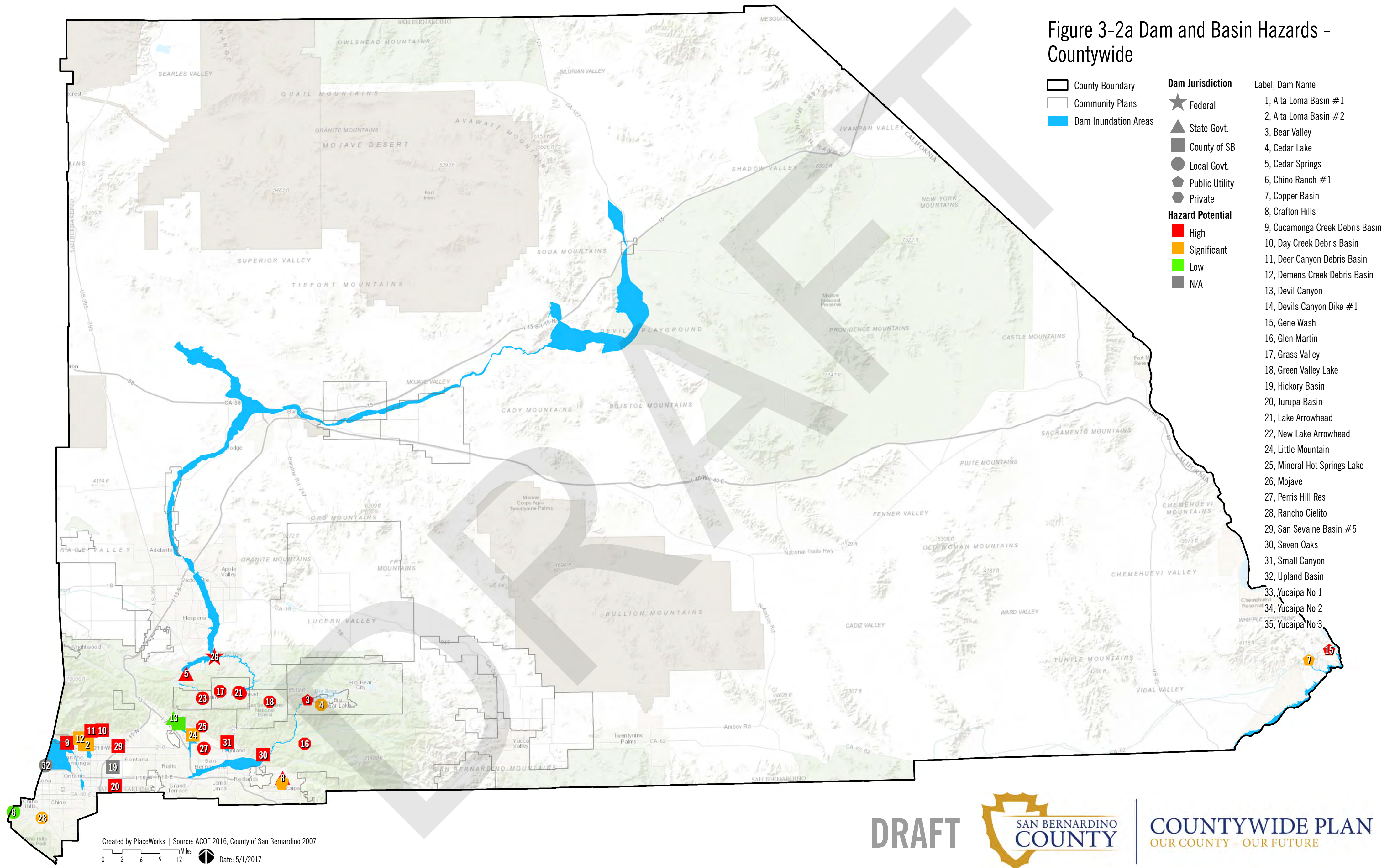
0 3 6 9 12 Miles Date: 5/1/2017

DRAFT



COUNTYWIDE PLAN
OUR COUNTY - OUR FUTURE

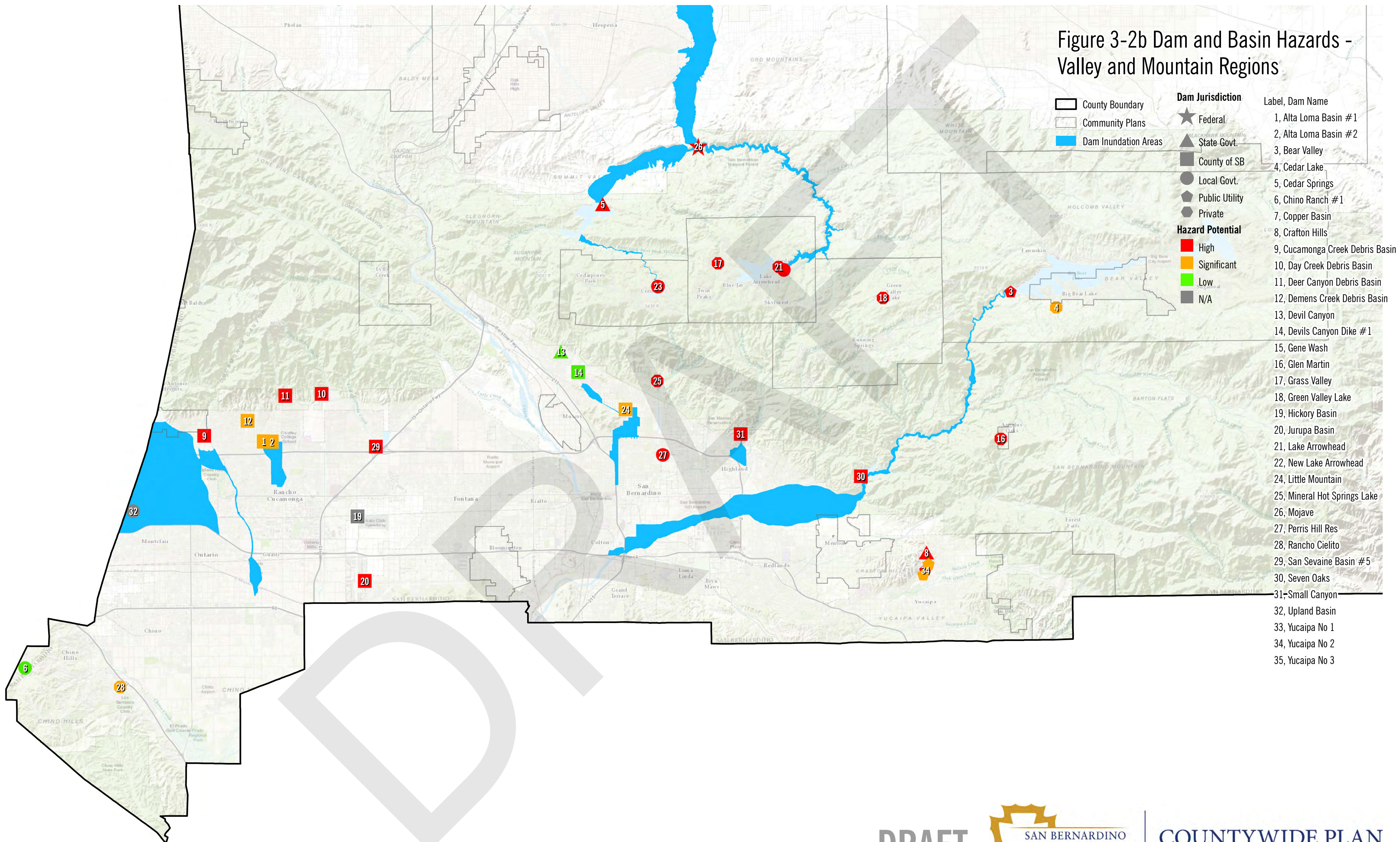
Figure 3-2a Dam and Basin Hazards - Countywide



- | | | |
|----------------------|-------------------------|---------------------------------|
| County Boundary | Dam Jurisdiction | Label, Dam Name |
| Community Plans | Federal | 1, Alta Loma Basin #1 |
| Dam Inundation Areas | State Govt. | 2, Alta Loma Basin #2 |
| | County of SB | 3, Bear Valley |
| | Local Govt. | 4, Cedar Lake |
| | Public Utility | 5, Cedar Springs |
| | Private | 6, Chino Ranch #1 |
| | Hazard Potential | 7, Copper Basin |
| | High | 8, Crafton Hills |
| | Significant | 9, Cucamonga Creek Debris Basin |
| | Low | 10, Day Creek Debris Basin |
| | N/A | 11, Deer Canyon Debris Basin |
| | | 12, Demens Creek Debris Basin |
| | | 13, Devil Canyon |
| | | 14, Devils Canyon Dike #1 |
| | | 15, Gene Wash |
| | | 16, Glen Martin |
| | | 17, Grass Valley |
| | | 18, Green Valley Lake |
| | | 19, Hickory Basin |
| | | 20, Jurupa Basin |
| | | 21, Lake Arrowhead |
| | | 22, New Lake Arrowhead |
| | | 24, Little Mountain |
| | | 25, Mineral Hot Springs Lake |
| | | 26, Mojave |
| | | 27, Perris Hill Res |
| | | 28, Rancho Cielito |
| | | 29, San Sevaine Basin #5 |
| | | 30, Seven Oaks |
| | | 31, Small Canyon |
| | | 32, Upland Basin |
| | | 33, Yucaipa No 1 |
| | | 34, Yucaipa No 2 |
| | | 35, Yucaipa No 3 |

Created by PlaceWorks | Source: ACOE 2016, County of San Bernardino 2007
 0 3 6 9 12 Miles Date: 5/1/2017

Figure 3-2b Dam and Basin Hazards - Valley and Mountain Regions



- | | | |
|----------------------|-------------------------|---------------------------------|
| County Boundary | Federal | Label, Dam Name |
| Community Plans | State Govt. | 1, Alta Loma Basin #1 |
| Dam Inundation Areas | County of SB | 2, Alta Loma Basin #2 |
| | Local Govt. | 3, Bear Valley |
| | Public Utility | 4, Cedar Lake |
| | Private | 5, Cedar Springs |
| | Hazard Potential | 6, Chino Ranch #1 |
| | High | 7, Copper Basin |
| | Significant | 8, Crafton Hills |
| | Low | 9, Cucamonga Creek Debris Basin |
| | N/A | 10, Day Creek Debris Basin |
| | | 11, Deer Canyon Debris Basin |
| | | 12, Demens Creek Debris Basin |
| | | 13, Devil Canyon |
| | | 14, Devils Canyon Dike #1 |
| | | 15, Gene Wash |
| | | 16, Glen Martin |
| | | 17, Grass Valley |
| | | 18, Green Valley Lake |
| | | 19, Hickory Basin |
| | | 20, Jurupa Basin |
| | | 21, Lake Arrowhead |
| | | 22, New Lake Arrowhead |
| | | 24, Little Mountain |
| | | 25, Mineral Hot Springs Lake |
| | | 26, Mojave |
| | | 27, Perris Hill Res |
| | | 28, Rancho Cielito |
| | | 29, San Sevaine Basin #5 |
| | | 30, Seven Oaks |
| | | 31, Small Canyon |
| | | 32, Upland Basin |
| | | 33, Yucaipa No 1 |
| | | 34, Yucaipa No 2 |
| | | 35, Yucaipa No 3 |

Created by PlaceWorks | Source: ACOE 2016, County of San Bernardino 2007

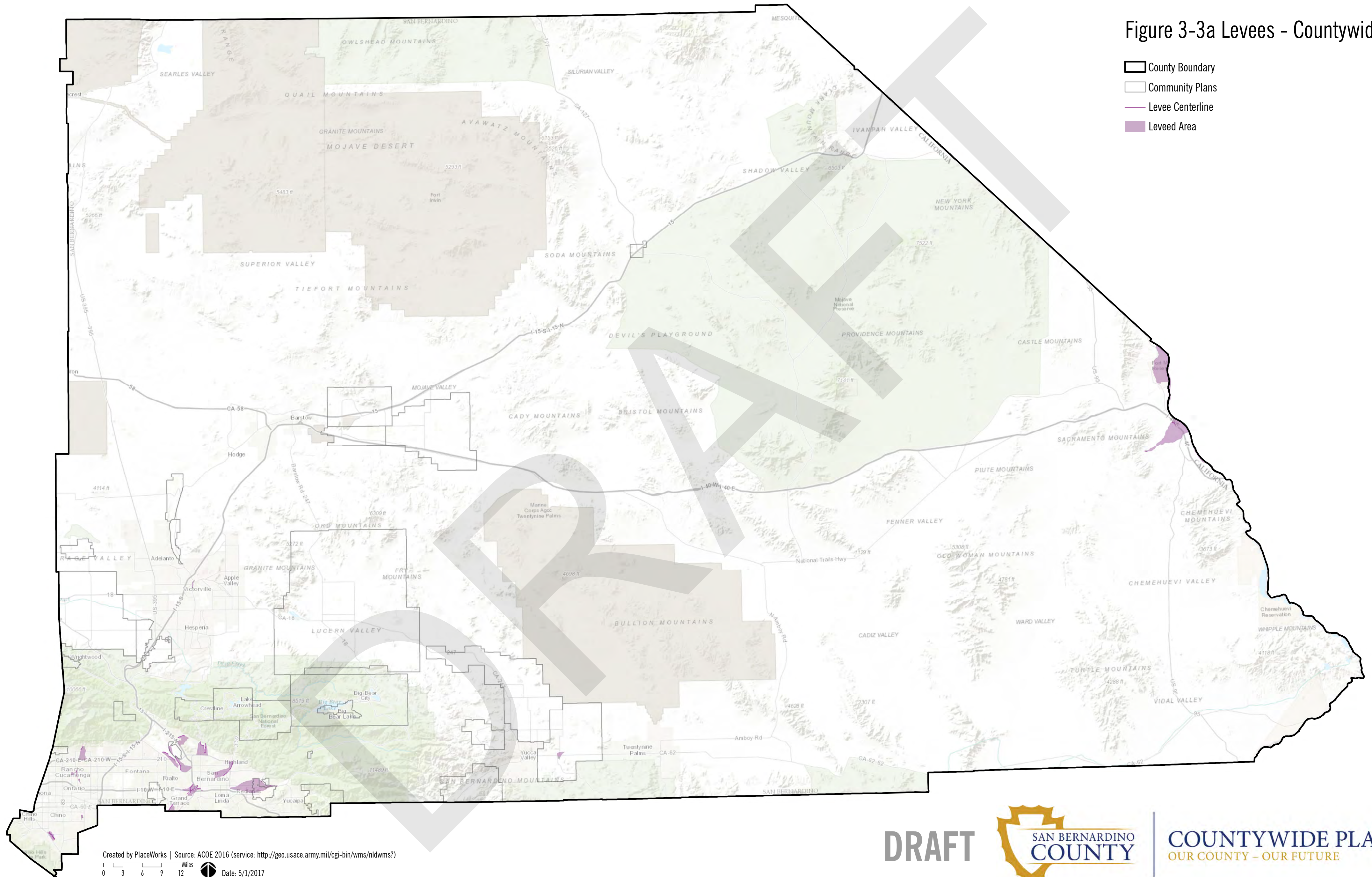
0 3 6 9 12 Miles Date: 5/1/2017





DRAFT




COUNTYWIDE PLAN
OUR COUNTY - OUR FUTURE

Figure 3-3a Levees - Countywide



-  County Boundary
-  Community Plans
-  Levee Centerline
-  Leveed Area

Created by PlaceWorks | Source: ACOE 2016 (service: <http://geo.usace.army.mil/cgi-bin/wms/nldwms?>)

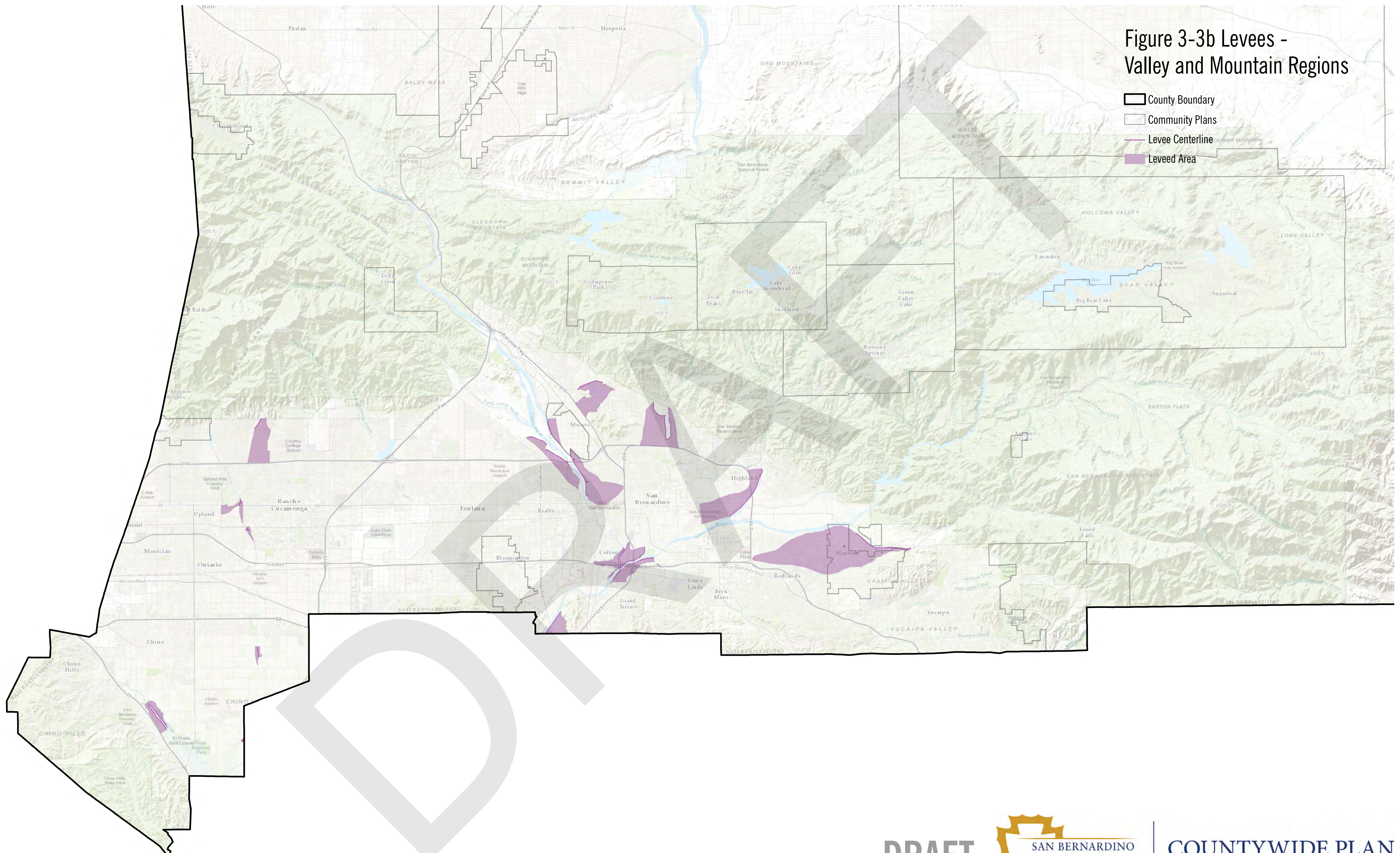
0 3 6 9 12 Miles  Date: 5/1/2017

DRAFT



COUNTYWIDE PLAN
OUR COUNTY - OUR FUTURE

Figure 3-3b Levees - Valley and Mountain Regions



Created by PlaceWorks | Source: ACOE 2016 (service: <http://geo.usace.army.mil/cgi-bin/wms/nldwms?>)

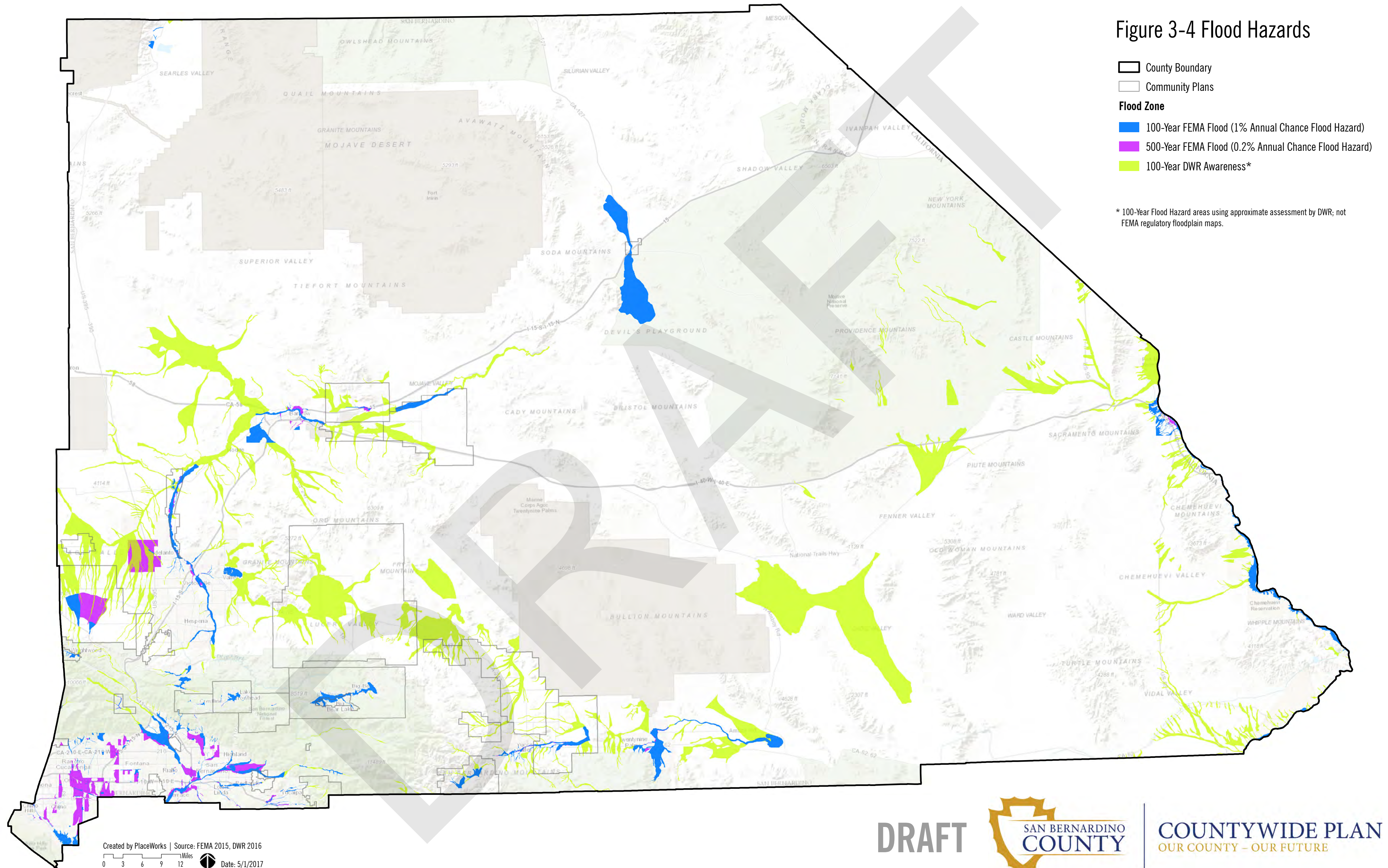
0 3 6 9 12 Miles Date: 5/1/2017

DRAFT



COUNTYWIDE PLAN
OUR COUNTY - OUR FUTURE

Figure 3-4 Flood Hazards

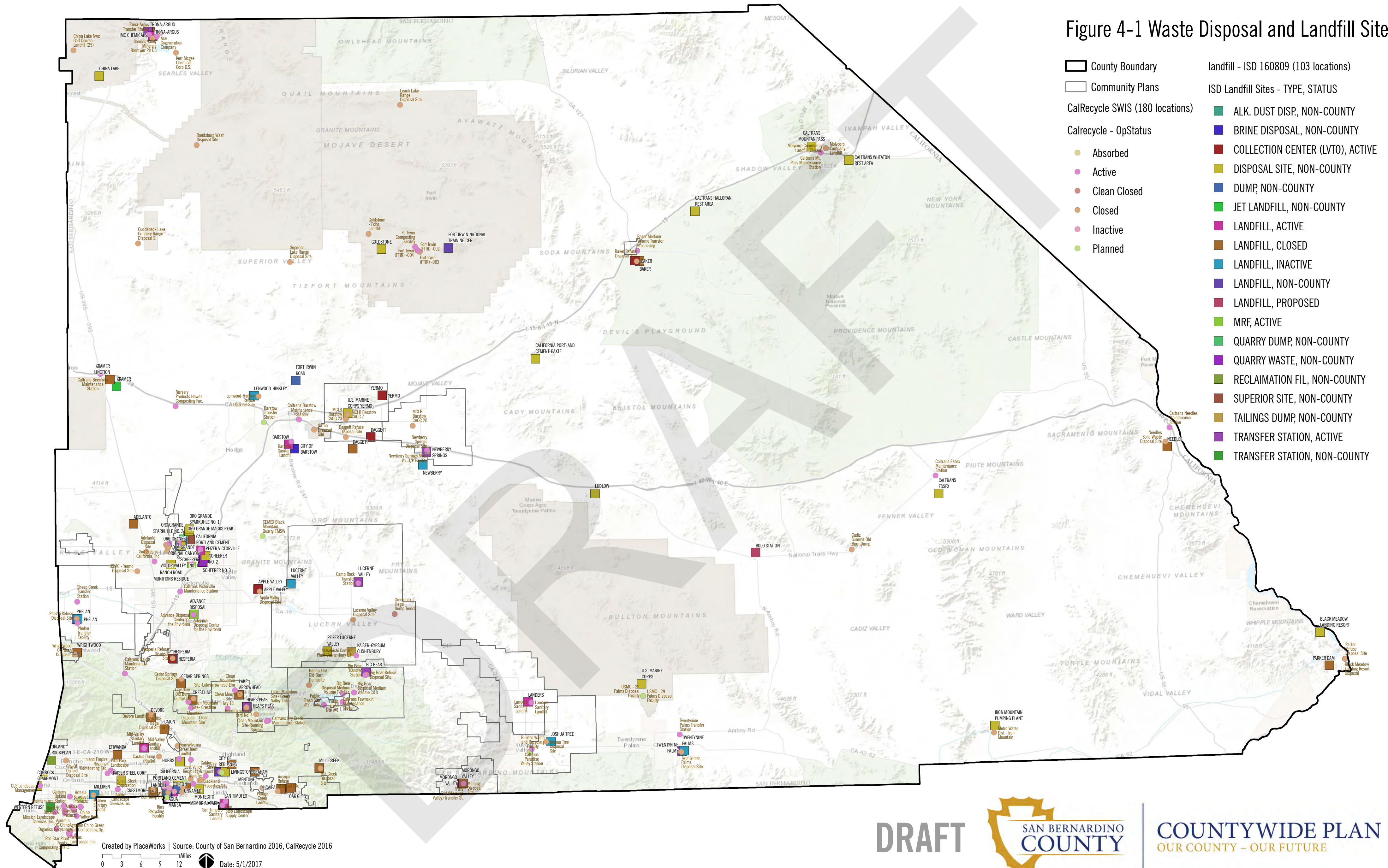


DRAFT



COUNTYWIDE PLAN
 OUR COUNTY - OUR FUTURE

Figure 4-1 Waste Disposal and Landfill Sites



Created by PlaceWorks | Source: County of San Bernardino 2016, CalRecycle 2016

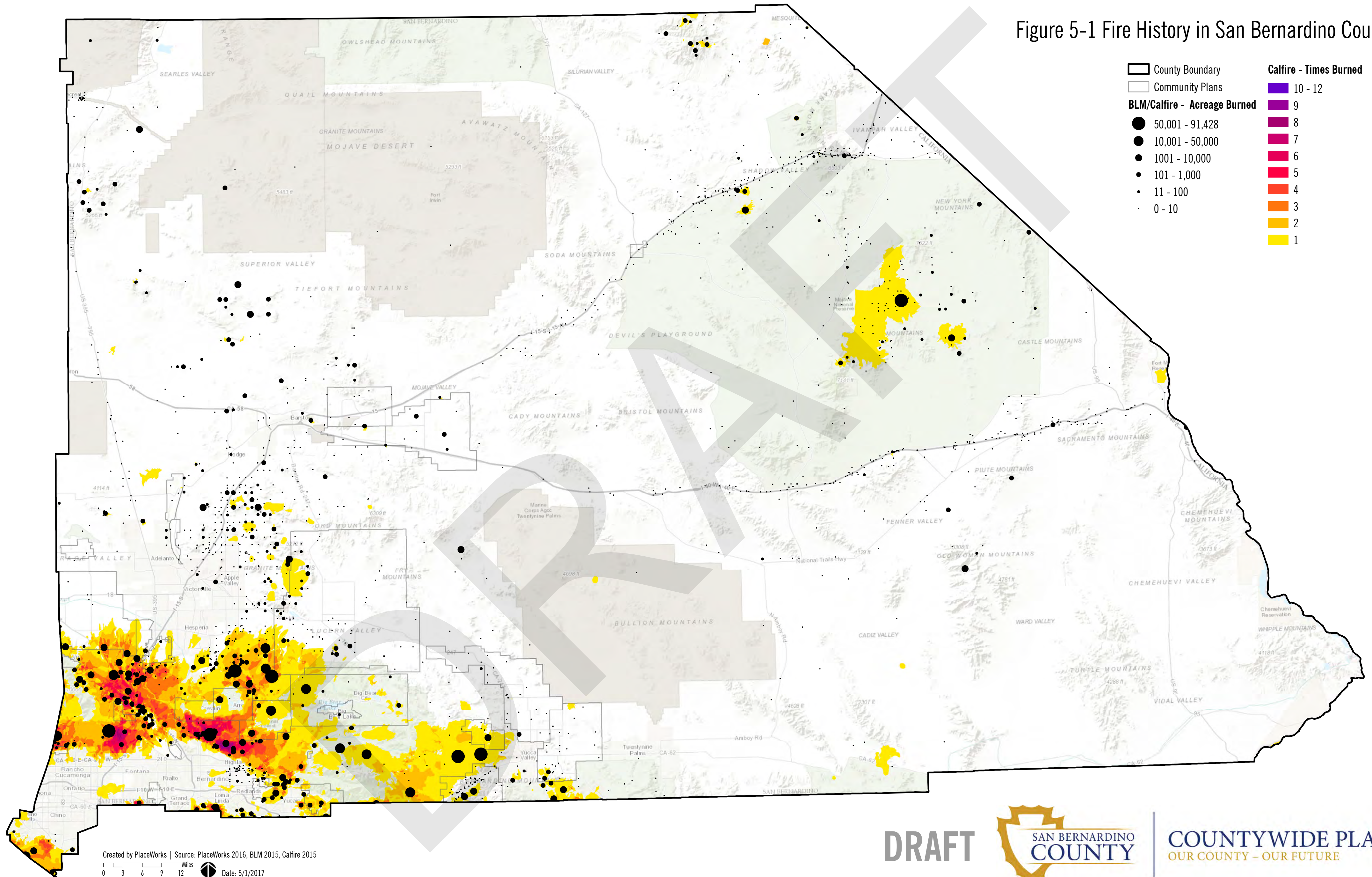
0 3 6 9 12 Miles Date: 5/1/2017

DRAFT



COUNTYWIDE PLAN
OUR COUNTY - OUR FUTURE

Figure 5-1 Fire History in San Bernardino County



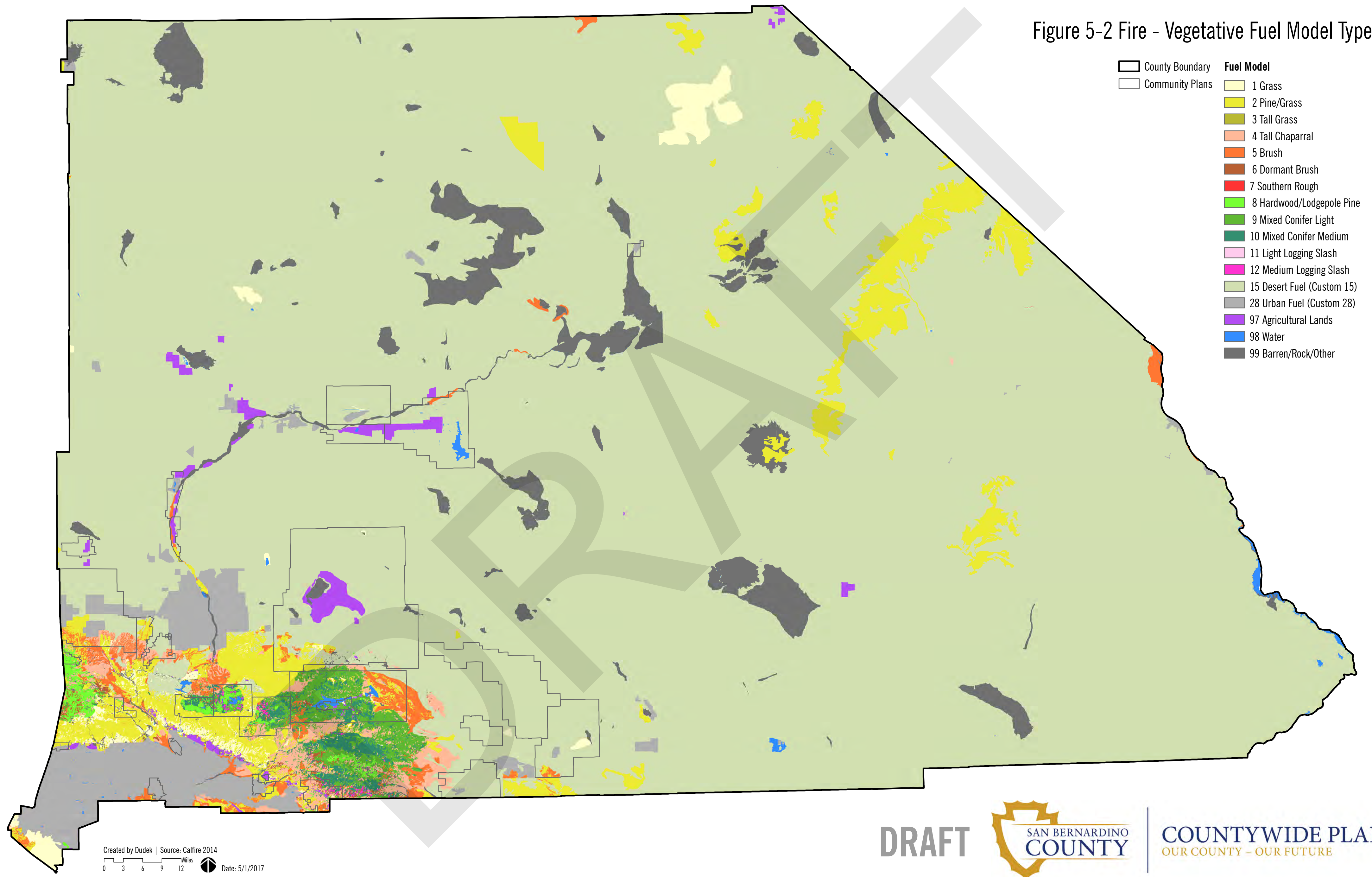
Created by PlaceWorks | Source: PlaceWorks 2016, BLM 2015, Calfire 2015
 0 3 6 9 12 Miles Date: 5/1/2017

DRAFT



COUNTYWIDE PLAN
 OUR COUNTY - OUR FUTURE

Figure 5-2 Fire - Vegetative Fuel Model Types



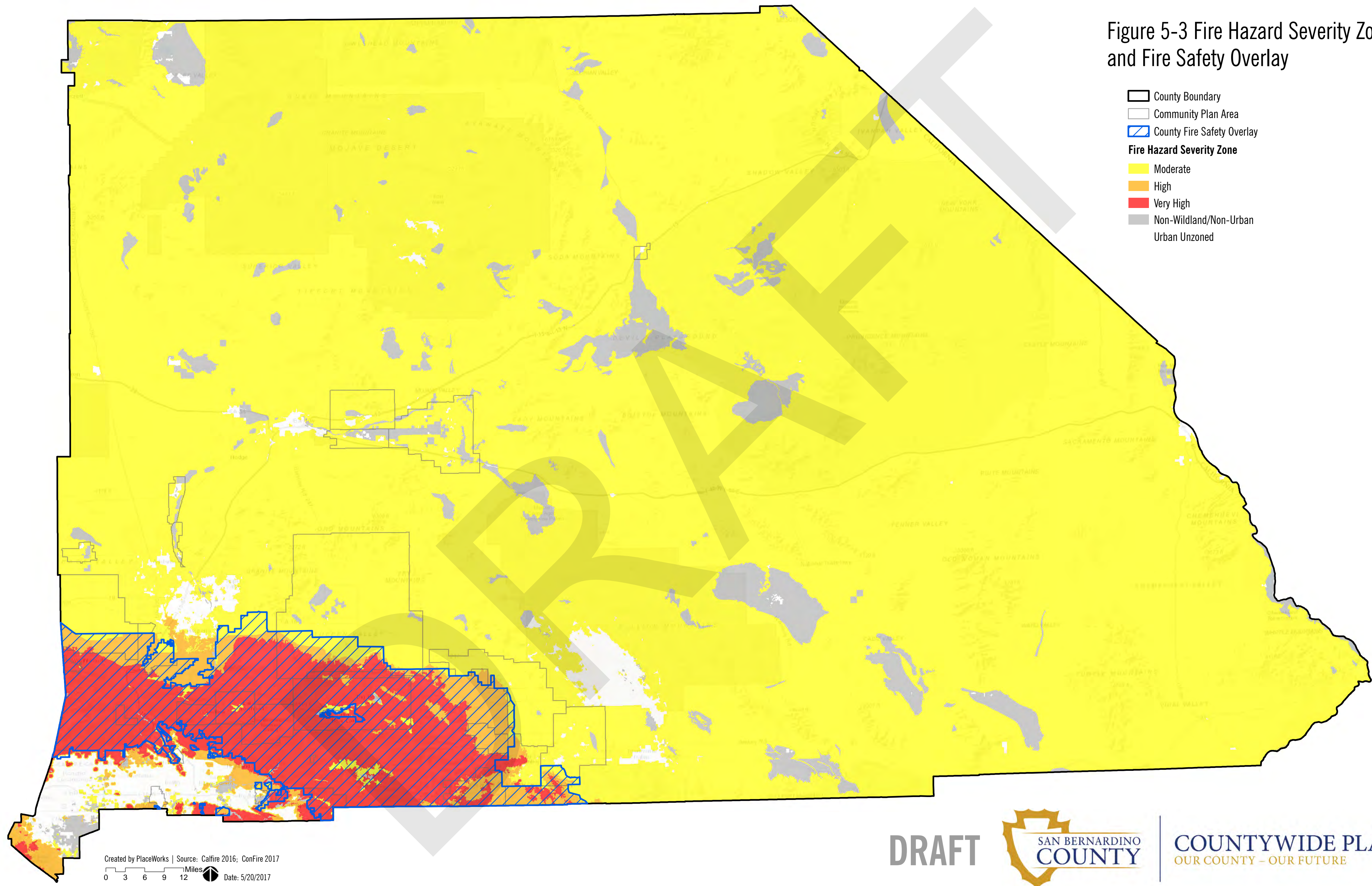
Created by Dudek | Source: Calfire 2014
 0 3 6 9 12 Miles
 Date: 5/1/2017

DRAFT



COUNTYWIDE PLAN
 OUR COUNTY - OUR FUTURE

Figure 5-3 Fire Hazard Severity Zones and Fire Safety Overlay



- County Boundary
- Community Plan Area
- County Fire Safety Overlay
- Fire Hazard Severity Zone**
- Moderate
- High
- Very High
- Non-Wildland/Non-Urban Urban Unzoned

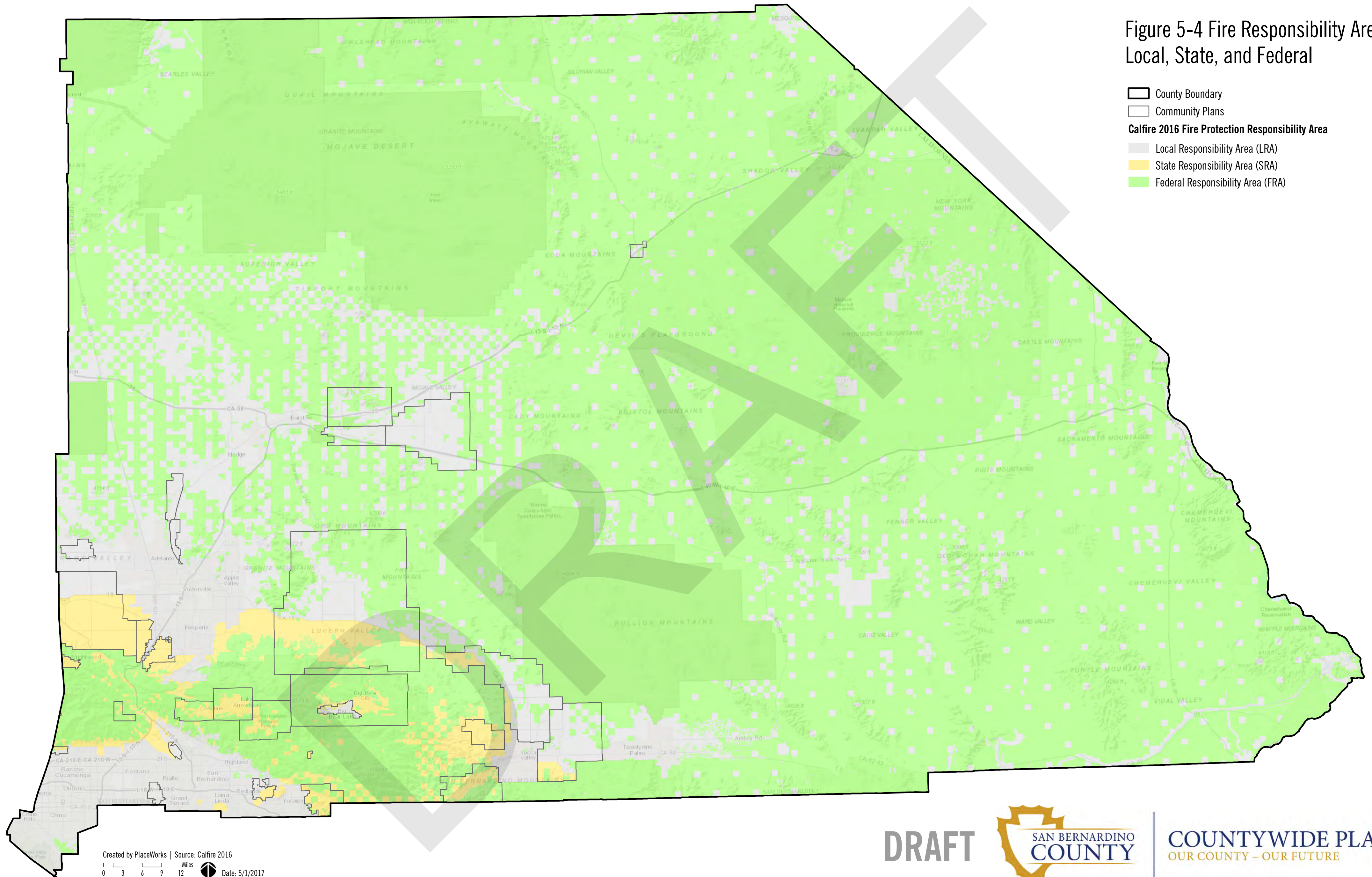
Created by PlaceWorks | Source: CalFire 2016; ConFire 2017
 0 3 6 9 12 Miles Date: 5/20/2017

DRAFT



COUNTYWIDE PLAN
 OUR COUNTY – OUR FUTURE

Figure 5-4 Fire Responsibility Areas - Local, State, and Federal



- County Boundary
- Community Plans
- Calfire 2016 Fire Protection Responsibility Area**
 - Local Responsibility Area (LRA)
 - State Responsibility Area (SRA)
 - Federal Responsibility Area (FRA)

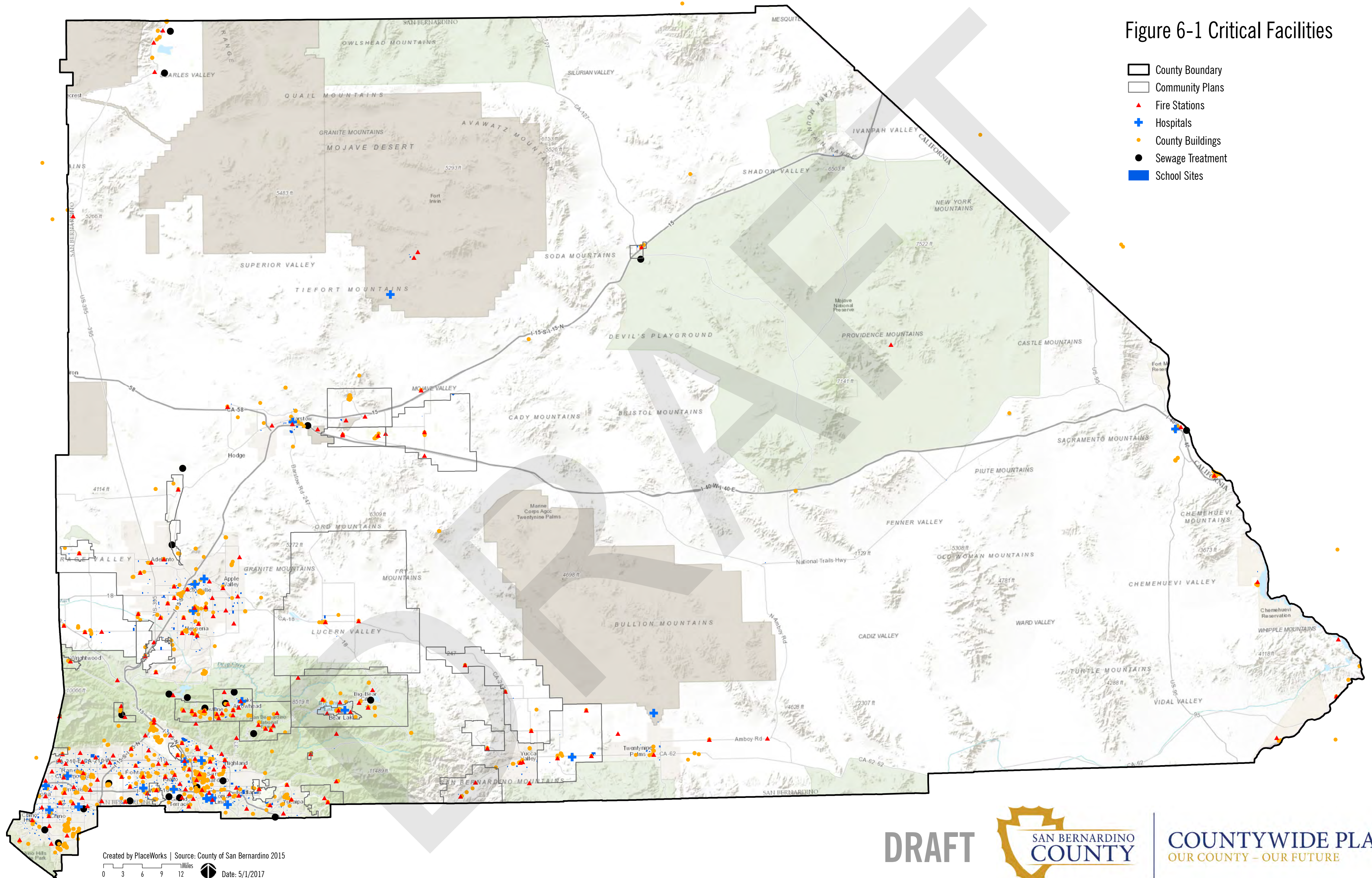
Created by PlaceWorks | Source: Calfire 2016
 0 3 6 9 12 Miles Date: 5/1/2017

DRAFT



COUNTYWIDE PLAN
 OUR COUNTY - OUR FUTURE

Figure 6-1 Critical Facilities



Created by PlaceWorks | Source: County of San Bernardino 2015

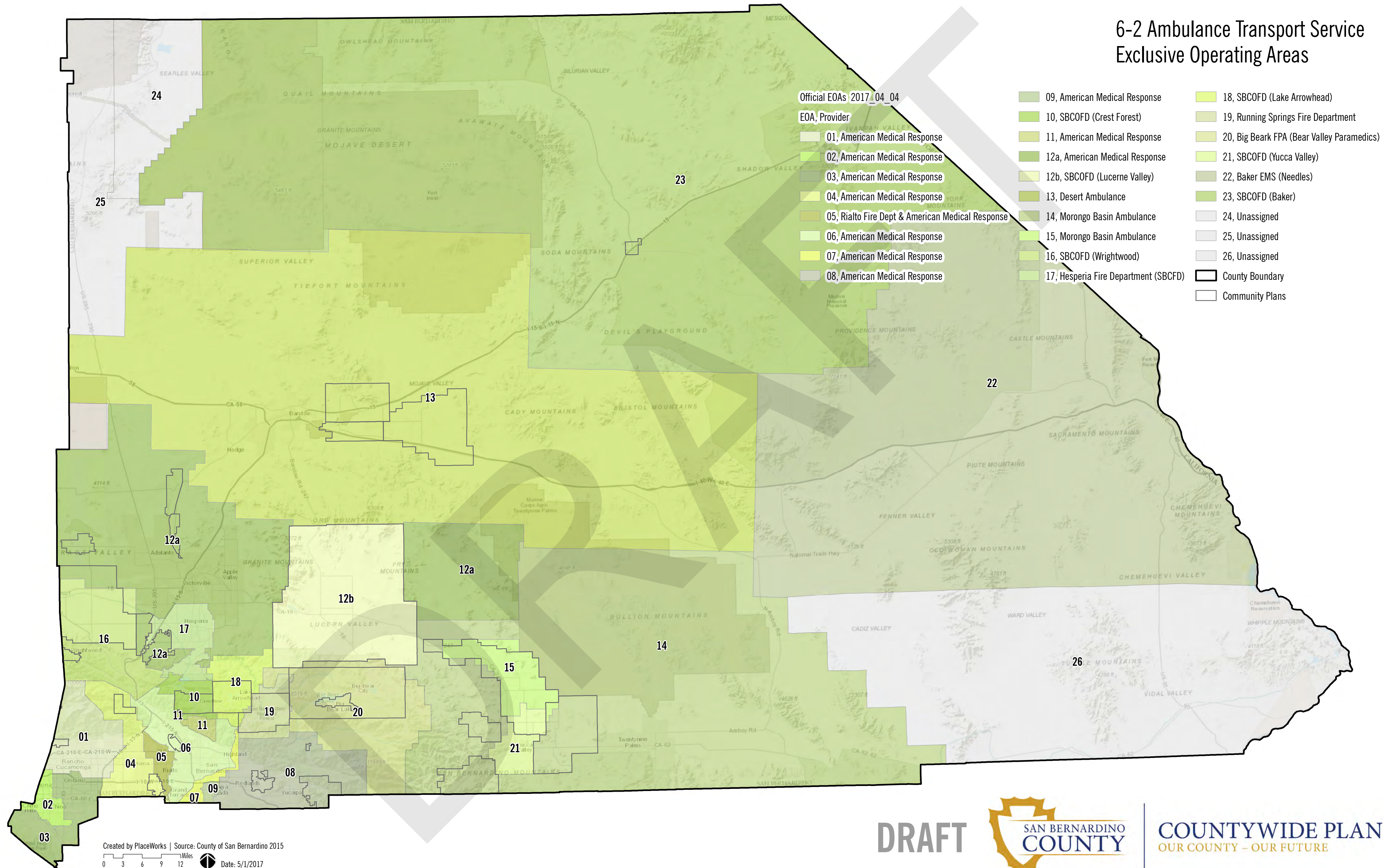
0 3 6 9 12 Miles Date: 5/1/2017

DRAFT






COUNTYWIDE PLAN
OUR COUNTY - OUR FUTURE

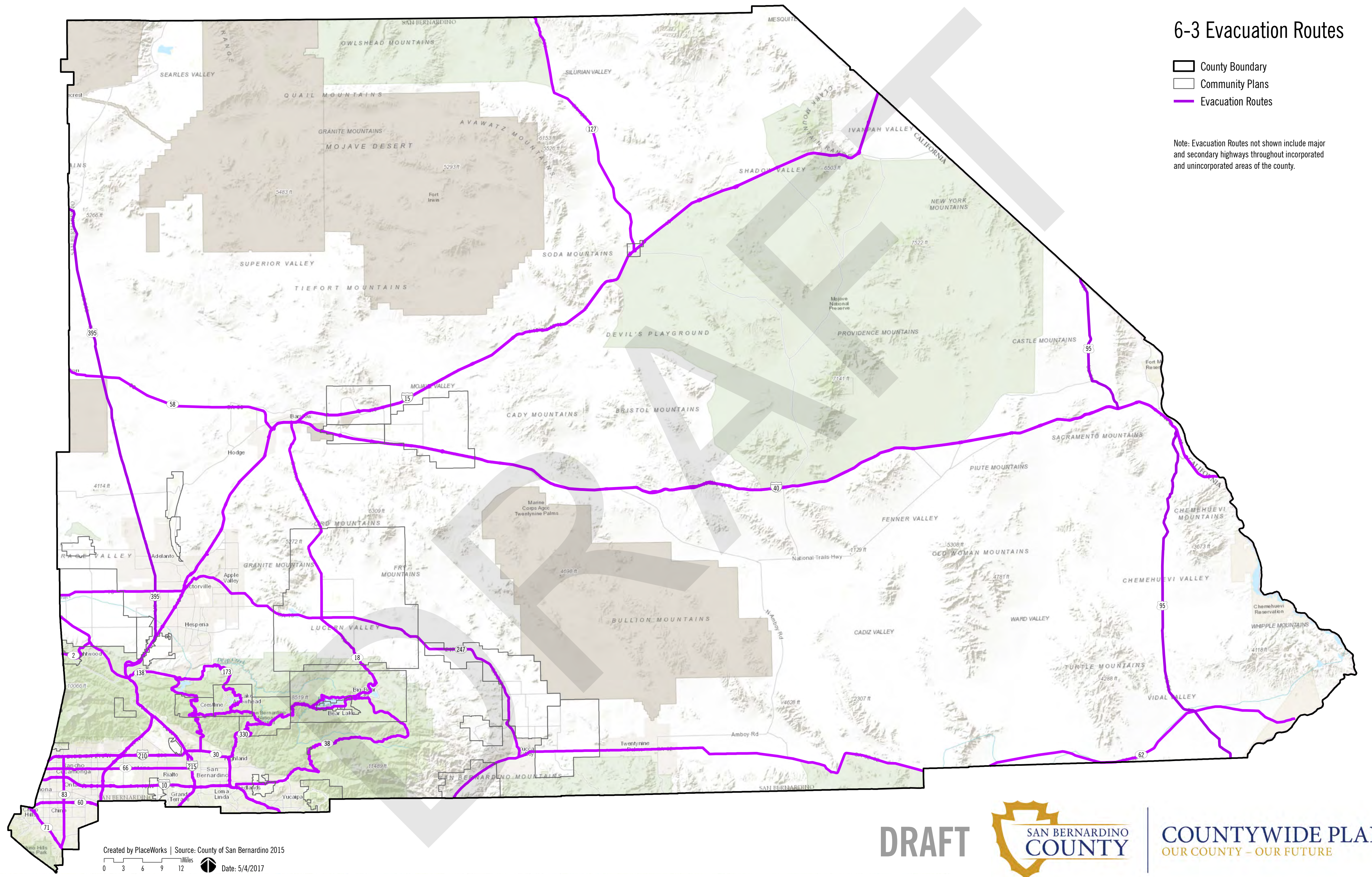
6-2 Ambulance Transport Service Exclusive Operating Areas




6-3 Evacuation Routes

-  County Boundary
-  Community Plans
-  Evacuation Routes

Note: Evacuation Routes not shown include major and secondary highways throughout incorporated and unincorporated areas of the county.



Created by PlaceWorks | Source: County of San Bernardino 2015
 0 3 6 9 12 Miles  Date: 5/4/2017

DRAFT



COUNTYWIDE PLAN
 OUR COUNTY - OUR FUTURE